

Safeguarding in Stockport

A brief overview

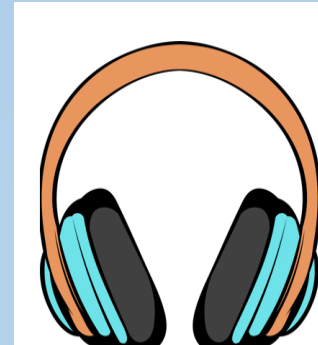
Dan Rowlands

Safeguarding Training manager

Stockport Safeguarding Children's Partnership (SSCP)



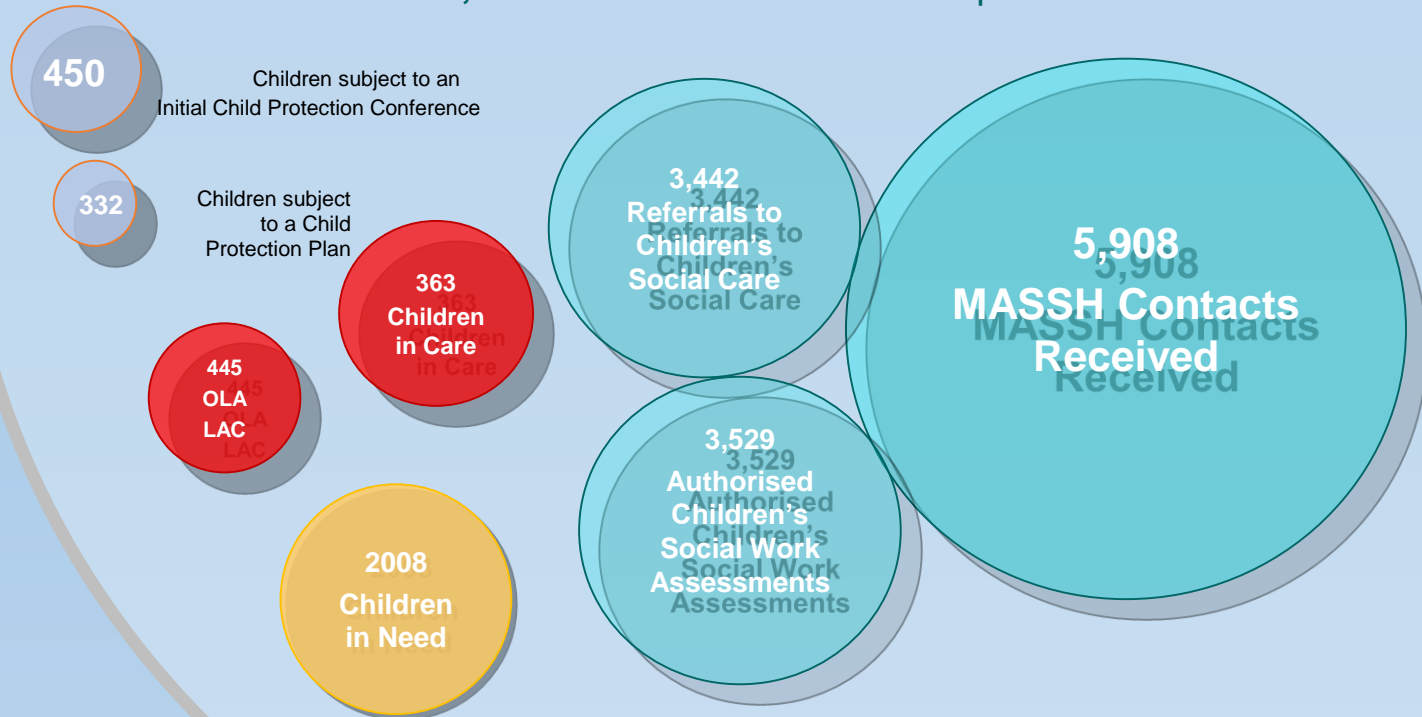
Housekeeping-Safety Agreement



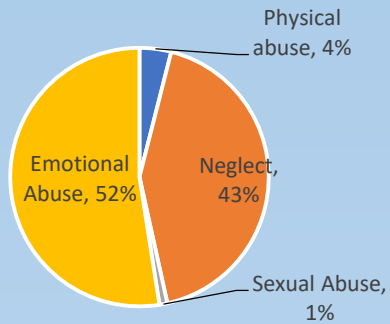
Local context

Safeguarding for young people

62,900 Children 0-17 live in Stockport



Child Protection Plans

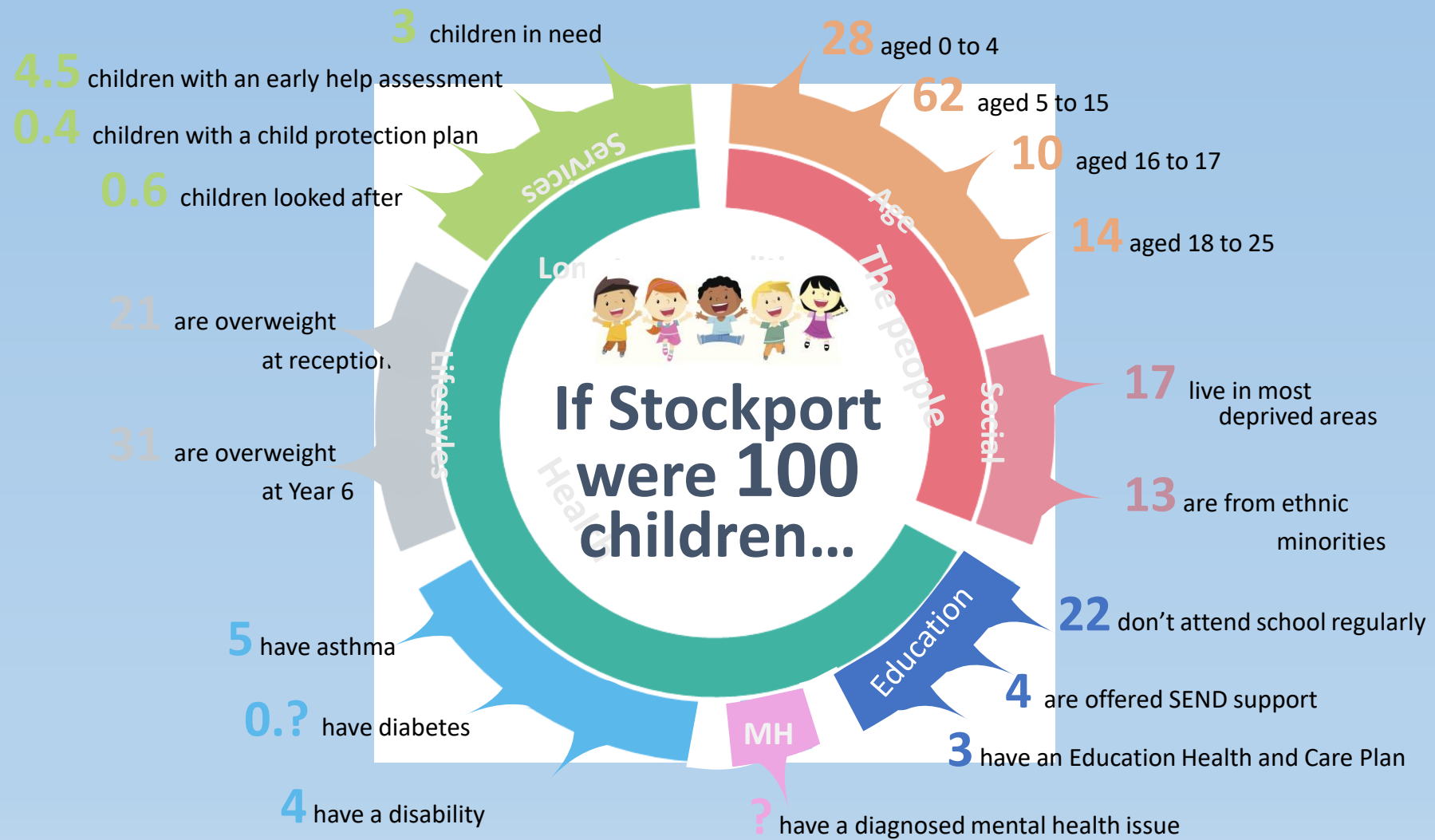


216 referrals to the LADO

3 Unaccompanied Asylum Seeking Children

10 children are living in a private fostering arrangement

Context



Statutory Guidance

- The Children Act 1989/2004
- The Care Act 2014 -vulnerable adults
- Working Together to Safeguard Children 2018
- Mental Capacity Act 2005
- Safeguarding Vulnerable Groups Act (2006) -introduced Disclosure and Barring Service

What is Safeguarding Children?

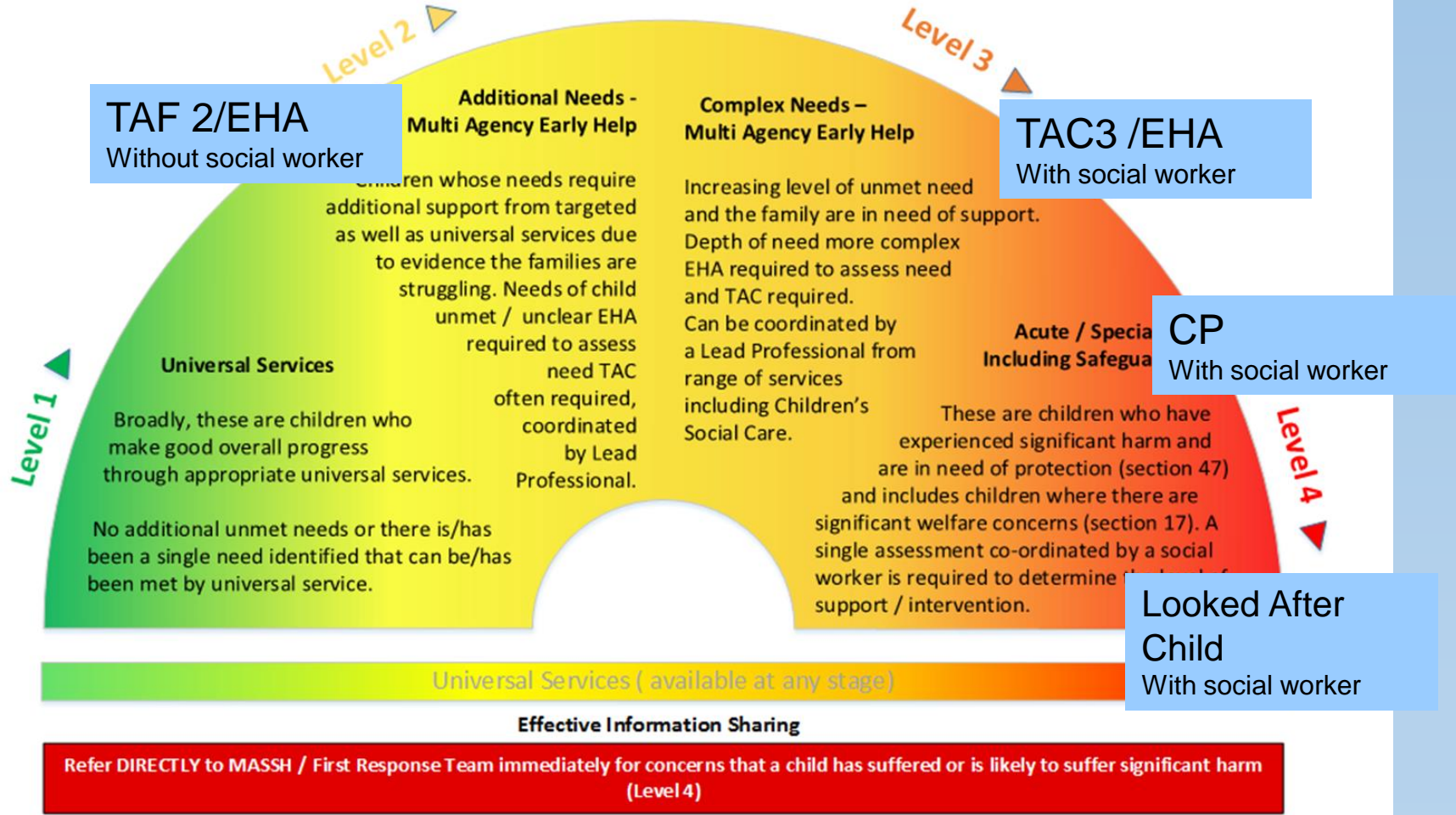
Safeguarding & promoting the welfare of children is defined as:

- protecting children from maltreatment
- preventing impairment of children's health or development
- ensuring that children grow up in circumstances consistent with the provision of safe and effective care
- taking action to enable all children to have the best outcomes

(Working Together 2018, p7)

**Stockport
Levels of Need: Visual Tool**

Important: This tool should ALWAYS be used in conjunction with the Levels of Need document



What is safeguarding? Adults

Safeguarding adults can be defined as:

“protecting an adult’s right to live in safety, free from abuse and neglect.”

Disability, illness or frailty means that many adults over the age of 18 have to rely on other people to help them in their day-to-day living.

Sadly, it's because they have to depend on others that they become vulnerable and at risk of abuse. It's very often from people they know such as a relative, friend, neighbour or paid carer.

Care and support statutory guidance, Chapter 14

Stockport Safeguarding Adults Policy Definitions

Abuse: “an act or omission, a violation of an individual's dignity, human or civil rights by any other persons which results in significant harm to the physical, emotional or social well being of an adult at risk “

Adult at risk :

- Person aged 18 years or over
- Is or may be in need of community care services because of mental or other disability, age or illness
- Or unable to take care of themselves
- Or unable to protect themselves against significant harm
- Or do not have capacity to make a decision and are in need of care and support

What is Safeguarding?

General points to remember

- Everyone has a responsibility
- Everyone has a role to play
- No one person can have a full picture
- Sharing information
- Taking prompt action
- Children are up to 18 years
- A person who is 18 and over could be an adult at risk

Quiz

- A parent spanking a child, any age, on his/her bottom
- Charles is registered blind and his neighbour Frank comes in to read his mail to him. This includes him having access to Charles's bank account details.
- An 11 year old child left at home regularly whilst parents go to work
- A volunteer regularly working with children without a DBS check

Recognising Abuse

The 10 types of abuse

Children's & Adult's

- Physical abuse-cuts and bruises
- Sexual abuse-STI, pregnancy
- Psychological or emotional abuse, lack of confidence, self harm
- Neglect or acts of omission-malnourished, home alone.

Adult's

- Domestic violence or abuse
- Financial or material abuse
- Modern slavery
- Discriminatory abuse
- Organisational or institutional abuse
- Self-neglect

What do I need to do?

- Know how to report your concerns— if you are worried about a child, young person or adult you may wish to talk to them, listen calmly and reassure them that it's not their fault and encourage them to tell you what's happened. If you can't speak to the person directly that's ok but it's important that you tell someone about your concerns.
- If you believe a person to be at immediate risk of harm or in need of emergency medical attention call the
- emergency services on 999
- Otherwise if you are worried about a child or young person call Stockport Children's Social Care Team Via the MASSH on **0161 217 6028**.
- If you are worried about an adult then call Telephone: **0161 217 6029**. Outside normal office hours please contact **0161 718 2118**.
- There is also an online referral form.
- [MASSH referral form](#)

Safer Working Practices

- Setting up an organisation
- Audit workplace
- NCVO- National Council for Voluntary Organisations

ncvo.org.uk

NSPCC-CASPAR & Netaware

<https://learning.nspcc.org.uk/safeguarding-child-protection/voluntary-community-groups>

- Sector 3

www.sector3sk.org

info@sector3sk.org

- DBS check guidance

<https://www.gov.uk/guidance/dbs-check-requests-guidance-for-employers>

Effective Cycle of Practice





When might you be vulnerable & why?

- Alone with a child
- Administering first aid
- Restraining a child
- When a child seeks affection
- Providing intimate personal care
- Social networking sites

- Lack of training or support
- When you are unclear about guidance and/ or procedures
- When you fail to report or seek advice / poor lines of communication
- When you fail to record
- Ethos and culture

Allegations Management process

Guidance was introduced in 2006 following the Inquiry undertaken by Sir Michael Bichard into the murders of Holly Wells and Jessica Chapman by Ian Huntley in Soham in 2002.

- The guidance is designed to ;
- make it harder for unsuitable people to have access to children through their employment or volunteering activities
- deal efficiently and effectively with any allegations made against those people employed or working with children and young people via the allegations management process

Allegations Management process

- **Definition of an allegation**
- For the purpose of this process an allegation is where an adult working with or on behalf of children has:
 - Behaved in a way that has harmed, or may have harmed a child, or
 - Possibly committed a criminal offence against or related to a child, or
 - Behaved towards a child or children in a way that indicates unsuitability to work with children.

Who to contact?

Children

Local Authority Designated
Officer
LADO

Gill Moore

Safeguarding Children Unit
0161 474 5657

The NSPCC Whistleblowing Advice Line offers free advice and support to professionals with concerns about how child protection issues are being handled in their own or another organisation. If you think an organisation is putting children at risk, even if you're not certain, call us today to talk through your concerns. **Telephone 08000280285**

Adults

Telephone: 0161 217 6029.
Outside normal office hours
please contact 0161 718 2118.

Complex Safeguarding

Domestic Abuse including honour based violence and forced marriage

Child Sexual Exploitation

Serious Organised Crime - including child criminal exploitation

Modern Slavery and Trafficking

Female Genital Mutilation

Radicalisation and Extremism



DD

Domestic Abuse: Basic Awareness All Age



Resources

- Working together to safeguard children 2018
<https://www.gov.uk/government/publications/working-together>
- Greater Manchester Safeguarding procedures online-Tri-X
<https://greatermanchesterscb.proceduresonline.com>
- Stockport Local Offer-SEND.
[Stockport Local Offer](#)
- Stockport Family and Early Help Assessments web pages
<https://www.stockport.gov.uk/early-help-assessment>
- Safeguarding Adults in Stockport
www.safeguardingadultsinstockport.org.uk
- Safeguarding Children In Stockport
<http://www.safeguardingchildreninstockport.org.uk/>